



Performance Under Pressure

Thank you for your purchase of our *Pressure Track 4*, (PT4) TPMS system developed for 4 wheel vehicle applications. Using Eco sensors with replaceable batteries this system can measure up to 60psi inflation.

This monitor can handles 4 sensors. With Monitor to Sensor distances of up to 30 feet

INTRODUCTION

The *Pressure Track 4* system monitors the tire's air pressure and temperature. It consists of external tire air pressure sensors and hand-held or mounted monitor.

Simply screwed onto the tire valve, the external sensor is used to monitor the air pressure and temperature inside the tire, and then wirelessly send this information to the monitor.

The pressure sensor regularly measures the tire's air pressure, temperature and sensor battery voltage.

The monitor indicates the condition of each tire by the graphics mode on the screen. Data for each tires pressure & temperature can be scrolled through on the screen.

The system has many functions of visual warnings and audible alarms to notify the operator of the systems status, pending and actual tire pressure and temperature changes that can have an effect on the vehicles safe operation.

SYSTEM SETUP

The monitor has low battery alarm, bracket mounting options and can be carried around the vehicle for ease of system set up and changes. The monitor comes with an environmentally conscious 12 volt ROHS vehicle lighter cord which is used for recharging the internal rechargeable Lithium power pack. Mount the monitor out of any direct heat or sun.

The monitor has 3 control buttons. The *Centre* button is the **SET** button. The *Left* button is the **UP** button and the *Right* button is the **DOWN** button.

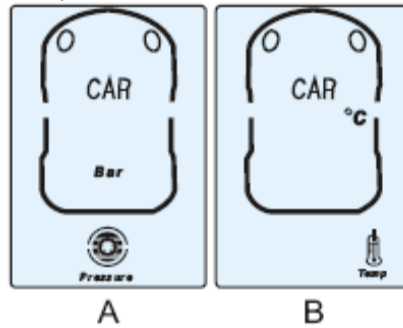
A motion sensor switches the monitor off when there is no motion to save the battery.

The system offers pressure settings in PSI, Bar, kPA, kgf/cm² and temperature in °C & °F

1. Setting the calibration, PSI, and either ° F or ° C are the most common in North America
2. Press the **SET** button and the monitor will power up
3. Press the **SET** button for **5 seconds** and the monitor will enter the **SETTING MODE** and beep (as diagram below)



- The monitor will flash the front left tire position. Press the **SET** button 4 times to scroll through all 4 tire positions, then the pressure icon on the screen will flash allowing you to change pressure calibration type (PSI/BAR etc) by pressing the **UP** or **DOWN** buttons. (As diagram A&B)



- Then press the **SET** button to switch to temperature type, (degrees F or C) change by pressing **UP** or **DOWN** buttons. Then press **SET** again to finalize your calibration type and return to the **SETTING MODE** with the front left wheel flashing.
- It is now time to determine your tire pressure settings. This should be determined by consulting your owners manual for the vehicle. The tires pressures should be set when the tires are cool, out of the sun and the vehicle has not been driven for at least 1hr. This will ensure changes caused by heat and vehicle operation will not affect your true pressure readings. A good quality digital tire gauge is recommended for initial settings.
- The front left wheel should be still flashing on the monitor. Press the **UP** or **DOWN** button to set that wheels desired normal operating pressure. When the desired pressure is reached press the **SET** button, this will start the front right wheel flashing on the monitor, again using the **UP** or **DOWN** button set the desired pressure and press the **SET** button. Continue setting each desired wheel position pressure in the same manner. The number of wheel positions depends on the number of sensors to be used up to 4. When all desired pressure settings have been made press and hold the **SET** button for 5 seconds , the monitor will then beep, the screen will darken and the monitor will enter the **STANDBY** mode.



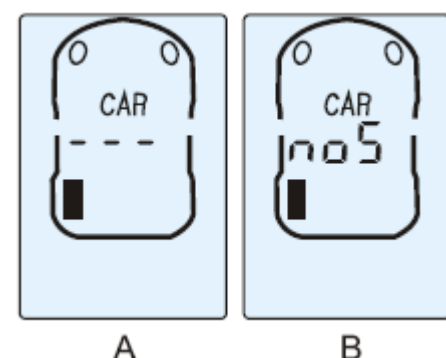
SENSOR ALIGNMENT & INSTALLATION

The sensor simply screws onto the tire valve (Dill Valve) it is critical that the complete valve be in good condition with no cracks, be correctly assembled with no wear or side play. Metal valve stems are preferred over rubber. The sensor should be finger tight and no tools used in its tightening. Use a small amount of lubrication/anti seize on Aluminum stem threads ensure none enters the Sensor or valve. A water/soap solution should be applied to the valve thread area after installation to ensure there are no air leaks. Most wheels do not need to be rebalanced after sensor installation.

- After all wheels have been inflated to their correct operating pressures. Press the **UP** and **DOWN** buttons on the monitor both at the same time.

The **Red warning light** will now be displayed and the wheel sensor position to be aligned will flash. Install a sensor on the wheel to be aligned. The monitor should then show the **Green warning light** and display the aligned wheels tire pressure.

- This means that this wheel has been detected and is correctly aligned, should the **Red warning light** still be displayed the sensor is not aligned correctly.
- Press the **UP** or **DOWN** button to scroll to the next wheel position and the **Red warning light** will be displayed and the wheel position to be aligned will flash. Install the sensor for this wheel and the **Green warning light** and wheel pressure will be displayed. Continue with this method until all wheels are aligned with sensors.
- To delete a sensor remove the sensor and press the **SET** button while in the alignment mode.



- After all sensors are aligned press the **UP** and **DOWN** buttons together to go back to the **STANDBY** mode. The **STANDBY** mode is the normal system operating mode and will show the aligned wheels on the display along with pressures. The **UP** and **DOWN** buttons enable scrolling.

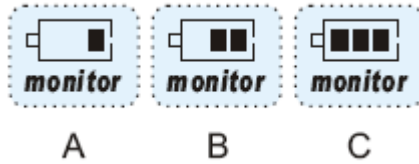
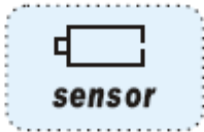
13. *The system can be shut off* by pressing the **SET** button for 8 seconds, the monitor will pass through the **SETTING MODE** before shutting down completely. The sensors still remain operative even in a power down situation.

14. PLEASE NOTE, Upon restarting the system it may take up to 4 minutes for all sensors to be detected by the system. Wheels with no sensors will be displayed as A and wheels with sensors and no signal will show as B. The sliding monitor antenna can improve signal reception if needed.

15. BATTERY LEVELS



The monitor has visible and audible alarms to warn of low battery levels, the monitor can be recharged by plugging in the adaptor charger cord (6 hrs for full charge), A.B.C. shows charging rate, with beep for full charge. The monitor can continuously work 192 hours at idle state **and will shut off to save power when no motion is detected.**



Should a sensor low battery be displayed with its associated location please contact us or your dealer for a replacement sensor.



16. SENSOR SECURITY



Should sensor security be an issue the sensors are supplied with a screw on locking system which comes complete with tool.

A

This prevents the sensors being unscrewed with a bare hand.



B



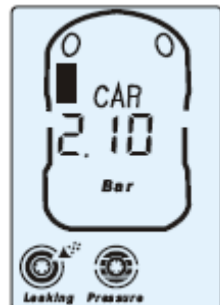
C



17. SYSTEM ALARMS

Should you get any alarms STOP and check your tires. Rapid Leakage

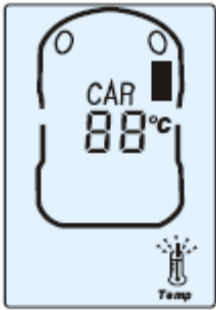
When the air pressure of a tire drops down more than 4 PSI within 2 minutes, the monitor will give an alarm and the corresponding wheel icon on the screen will flash to indicate the position of the tire with abnormal air pressure along with its air pressure value. Then the icon showing rapid drop in air pressure appears on the screen along with the **Red warning light** as the left diagram shows.



Slow Leakage

When the air pressure of a tire drops down more than 4 PSI within 2 – 10 minutes, the monitor will give an alarm and the corresponding wheel icon on the screen will flash to indicate the position of the tire with abnormal air pressure along with its air pressure value. Then the icon showing slow drop in air pressure appears on the screen along with the **Red warning light** as the right diagram shows.

Note: in the case of a fast or slow leakage, the sensor will deliver the alarm signal in either driving or parked status.

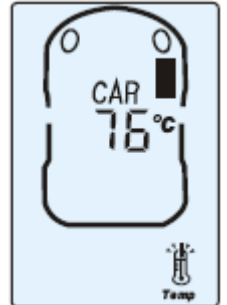


High Temperature Warning: Level 1

When the temperature inside a tire exceeds 85°C, the system will give a class 1 high temperature alarm and the monitor will indicate the position of the tire with the abnormal temperature along with its temperature value. Then the icon showing level 1 temperature alarm appears on the screen along with the **Red warning light** as the left diagram shows.

High Temperature Warning: Level 2

When the temperature inside a tire exceeds 75°C, the system will give a class 2 high temperature alarm and the monitor will indicate the position of the tire with the abnormal temperature along with its temperature value. Then the icon showing level 2 temperature alarm appears on the screen along with the **Red warning light** as the right diagram shows



Low Air Pressure Warning: Level 1

An initial alarm is activated when there is a pressure drop of 15% of the set sensor .
The wheel will be indicated along with the pressure symbol and a flashing red LED as the right diagram shows



Low Air Pressure Warning: Level 2

A warning level 2 is activated when there is a pressure drop of 25% of the set sensor .
The wheel will be indicated along with the pressure symbol and a flashing red LED as the right diagram shows



Low Air Pressure Warning: Level 3

A warning level 3 is activated when there is a pressure drop of 50% of the set sensor .
The wheel will be indicated along with the pressure symbol and a flashing red LED as the right diagram shows



High Air Pressure Warning

A high air pressure warning is activated when there is a pressure increase of 20% of the set sensor . The wheel will be indicated along with the pressure symbol and a flashing red LED as the right diagram shows



Sensor Error

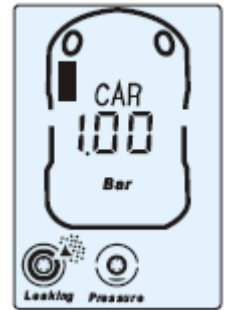
If the monitor doesn't receive a signal from the sensor within 20 minutes when in **STANDBY** mode, the system will alarm for 15 seconds, and the corresponding icon of the abnormal wheel sensor will also flash and indicate with "No S" which means there is something wrong with the sensor or the sensor is damaged. The system will alarm every 20 minutes if the monitor still can't receive the signal from the sensor. as the left diagram shows.

Note:

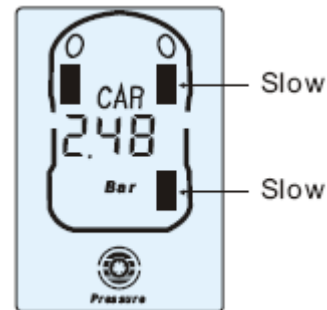
1. When the monitor is changed from **POWER-OFF** to **STANDBY** mode, the monitor will display "No S" instead of the detailed pressure and temperature value of the aligned tire, however the monitor

will indicate the correct value within 4 minutes if the sensor works normally.

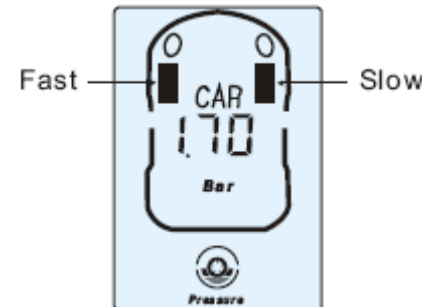
2. When there are several abnormalities with the same tire simultaneously, the monitor will indicate all the information as the right diagram shows:



3. When there are abnormalities with 2 or more tires simultaneously:
 - (a)When scrolling through wheel positions to check the tire pressure and temperature readings. Any normal tires corresponding icon will not flash and the monitor will just indicates the pressure and temperature value of this tire. The icon of an abnormal tire position will flash slowly to remind the user to check it.



- (b) If the abnormal tire is selected when checking the pressure and temperature, the corresponding icon of the abnormal tire will flash quickly, the monitor will indicate all the abnormal information of this tire and the icon of other abnormal tires will flash slowly as the right diagram shows:



19 GENERAL INFO

The monitor will give a continuous alarm for 15 seconds with the Red LED and backlight flashing along with the corresponding icon of the tire. Press "↑" **UP** or "↓" **DOWN** buttons to stop an alarm. The backlight will not be flashing and the monitor will just indicate the position of the aligned tire. The Red LED will not stop until the abnormal tire issues are eliminated.

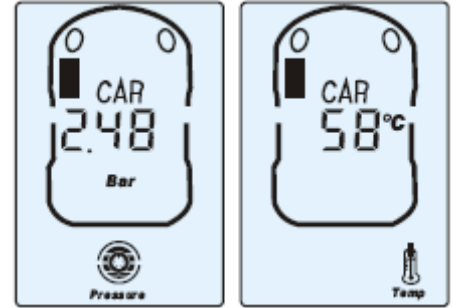
When the tire is inflated, rapid leakage or slow leakage may happen if the pressure inside the tire changes from the current pressure value to zero, The monitor will become normal and the alarm will stop after finishing inflating the tire within 2~10 minutes.

Deleting information of aligned tires

Hold down the **SET** button on the monitor for 5 seconds to delete the current aligned tire during setting mode.

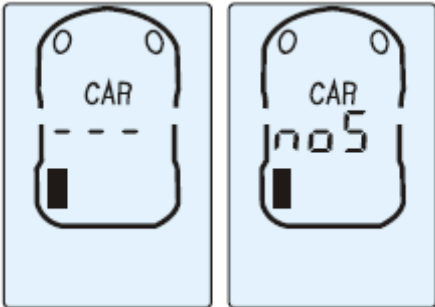
NOTE: *When the sensor's position is changed*, please delete the current alignment first and then re-align it. Otherwise there is no need to re-align the sensor even after inflation.

When exiting from the learning mode and checking the pressure and temperature values, the monitor will just indicate the information of the selected tires so long as all of the tires are to the specified values; After finishing the check, the backlight will go out and the monitor will indicate aligned sensors.



Checking Tire conditions

During the standby mode, press “↑ **UP**” or “↓ **DOWN**” buttons to check the air pressure and temperature values of the aligned tires. Press “↓” **DOWN**” button and the monitor will switch to indicate the next data as the *right graphic* shows.



The monitor will indicate “- - -” to show the tires that haven't been aligned as the *left graphic* shows, the monitor will indicate “**no S**” for aligned tires without signals.

Battery Capacity Indicator for Monitor and Sensor

When the monitor has low power, the battery icon and “MONITOR” icon on the screen flash it then gives a 10 seconds audible alarm.

When the sensor has low power, the battery icon and “SENSOR” icon together with the corresponding tire icon will be indicated on the screen along with a 10 second audible alarm. Low power sensors should be replaced with a new sensor as soon as possible.

Technical Specifications

Sensor

Working Temperature	-20 – 125 Cent
Working Humidity	0-- 95%
Dimension	28.5 X 27.5 X 27.5mm
Weight	9g
Battery Voltage	3V DC
Battery Life	1 year
Standby Current	500nA
Working Current	6mA
Pressure Measure Range	60psi
Pressure Measure Precision	1 psi
Temperature Measure Range	-20 – 125 Cent
Temperature Measure Precision	+/-3 Cent
Signal Transmitting Frequency	433.92MHz

Monitor

Working Voltage	3 VDC
Working Temperature	-20 – 60 Cent
Working Humidity	0 – 90%
Standby Current	0.1mA
Working Current	15 mA
Dimension	90 X 55 X 24mm
Signal Receiving Frequency	433.92MHz
Color of Backlight	White

Units Conversion

1 Bar=14.5 psi , 1 Bar=1.02 kgf/cm², C stands for Celsius, F stands for Fahrenheit, F=9c/5+32

OTHER

Tire pressure recommended operating pressures should be set when the ambient temperature is low or cold or where the tire has cooled down and is at a low temperature, out of the sun etc. Dramatic changes in tire pressure can occur because of increased or decreased ambient temperature; tire contact surface temperature etc, these and other situations should be taken into consideration when setting initial tire operating pressures. This system cannot warn you of impending side wall failures or blowouts, however it can supply you with irregular pressures and temperature information that may help to prevent this. To test fast leakage response, unscrew a sensor with monitor in range. Vehicle must have moved and the sensors & monitor not in sleep mode to see current data.

The **Pressure Track 4 System**, relies on a good air connection between the Pressure Track Sensors and the tire valve (known as the Dill Valve) which is located inside the tire valve stem.

The Dill Valve should be the correct size, be in good condition and be able to be depressed fully to allow the release of air to the Pressure Track sensor so it can operate.

Some valve stem extensions may cause inaccurate readings if they do not allow the sensor to operate correctly, standard short metal bodied stems are recommended for best performance.

Should you have difficulty with a pressure sensor not operating correctly we recommend that you contact a tire professional to ensure that the tire stem and Dill Valve are installed and operating correctly.

Do not use tire sealants when using this system. Over a period of time tires may loose pressure naturally, through the tire itself or for other reasons such as rim leakage etc.

However after the Pressure Track valve sensors (including locking mechanism, if fitted) are installed it is recommended that the sensor and valve stem be completely covered in a soapy solution of 1 part liquid soap to 2 parts water, to see if there are any air bubbles coming from the valve and sensor area indicating that the tire is leaking air.

If air bubbles are visualized in any of these areas, the tire may deflate and the **Pressure Track**, system will not operate correctly. The wheel sensors are weatherproof and can be run in the rain.

A tire professional should be consulted should any of these areas prove to be a problem

Please note, Pressure Track Systems, operates on an RF system, as with many RF tire systems this system can suffer from interference depending on the systems location thus causing the system to be inaccurate or not operate at all. We cannot guarantee that the display will receive the sensor signal accurately.

Purchasers of this product should not rely on this tire pressure monitoring system for safety and should check the condition and pressure of their vehicles tires on a regular basis as described by the manufacturer of the vehicle or tire manufacturer.

Tire pressures and temperatures are not the only things that can affect tire safety; we suggest daily visual inspections and checks by tire professionals.

LIMITED WARRANTY

HawksHead will, within 12 months from date of original purchase, repair or replace free of charge any defective component (except batteries) which upon careful inspection is found, in our sole judgment, to have material or manufacturing defects, provided it is received freight prepaid, accompanied by the original purchasers sales slip and an authorized Return Merchandise Authorization number (RMA #.). You may obtain an RMA # by emailing RMA@TPMS.CA

DISCLAIMER OF WARRANTY: *Neither the seller nor the manufacturer will be liable for any loss damage or injury directly or indirectly arising from the use or inability to determine the use of this product. Before using, the user shall determine the suitability of the product for its intended use, and the user shall assume all responsibility and risk in connection herewith.*

PLEASE NOTE: SOME STATES DO NOT ALLOW LIMITATIONS ON HOW LONG IMPLIED WARRANTIES MAY LAST OR DO NOT ALLOW EXCLUSIONS OR LIMITATIONS OF INCIDENTAL OR CONSEQUENTIAL DAMAGES, SO THOSE EXCLUSIONS OR LIMITATIONS MAY NOT BE APPLICABLE TO YOU.

PLEASE CHECK OUR FREQUENTLY ASKED QUESTIONS ON OUR WEBSITE SUPPORT LINK AT WWW.TPMS.CA

© [HawksHead Systems Inc](#)